



BOSNIA AND HERZEGOVINA

THE FEDERATION OF BOSNIA AND HERZEGOVINA

JP AUTOCESTE FBiH d.o.o. MOSTAR

PROJECT:

**MOTORWAY ON CORRIDOR V_c IN THE FEDERATION OF BOSNIA
AND HERZEGOVINA
CONSTRUCTION OF SUBSECTION KLOPČE - DONJA GRAČANICA**

PROGRESS REPORT NO. 11

**Component A
Agreement No. 1588P
Component B
Agreement No. 1589PB**

As of 31st December, 2018

Mostar, January 2019

CONTENTS

CONTENTS	2
1. INTRODUCTION	3
2. LOAN AGREEMENT	5
3. TECHNICAL DESCRIPTION OF SUBSECTION KLOPČE - DONJA GRAČANICA	5
4. PROCUREMENT PLAN	7
5. MAIN DESIGN	8
6. LAND EXPROPRIATION	8
7. CONSTRUCTION PERMITS	9
8. CONSTRUCTION ACTIVITIES OF SUBSECTION KLOPČE – DONJA GRAČANICA	10
9. CONSTRUCTION PROJECT	12
10. FINANCIAL POSITION	13
10.1 OFID- OPEC FUND FOR INTERNATIONAL DEVELOPMENT	13
11. PROGRESS OF CONSTRUCTION WORKS ON SUBSECTION KLOPČE - DONJA GRAČANICA ...	16

1. INTRODUCTION

At conferences held in Crete and Helsinki in year 1994 and 1997, ten Trans-European corridors were identified as routes in Central and Eastern Europe which require priority investments. Corridor V (five) which is linking Kiev in the Ukraine to the Adriatic Sea via Lvov and Budapest (Hungary) is one of them. Consisting of three branches, the Vc branch follows European route E73 from Budapest to Ploče (Croatia) via Osijek (Croatia) and Sarajevo (Bosnia and Herzegovina). Bosnia and Herzegovina contains the longest section of the Vc branch. With a total length of approximately 323 km the driving force to construct Corridor Vc motorways is to improve connectivity of BH with its neighbouring countries and to enhance its potential for economic development. The project is strongly supported by the government and is expected to enable BH to integrate better with the European economic and social structure.

Corridor Vc motorway in BH includes four main sections (known in Government documents as Lots), as follows:

- **Lot 1:** Svilaj on The Sava River (connection to Corridor X) - Doboj South;
- **Lot 2:** Doboj South - Sarajevo South (Tarčin);
- **Lot 3:** Sarajevo South (Tarčin) - Mostar North;
- **Lot 4:** Mostar North – Bijača on the southern border with Croatia.

By now 92 km of motorway have been constructed and have been put in use. The constructed parts refer to subsections: Kakanj - Zenica South, Zenica South - Sarajevo North, Sarajevo North – Sarajevo West, section of Sarajevo West - Tarčin as well as section Zvirovići - Bijača (from Medjugorje interchange to the crossing border Bijača.)

The above-mentioned sections have been financed by the loan funds of the EIB and the EBRD as well as with own funds of JP Autoceste FBH.

The section Donja Gračanica - Drivuša, subsection Klopče - Donja Gračanica has been financed by the loan funds of the OFID - OPEC Fund for International Development.

By Decision No. 01-6328/14 of JP Autoceste FBH dated October 30th, 2014, Project Implementation Unit for the construction of motorway on Corridor Vc, section Donja Gračanica - Drivuša, subsection Klopče - Donja Gračanica was appointed within JP Autoceste FBH consisting of competent employees. This initial Decision was amended by the new Decision No. 01-5327/15 dated November 2nd, 2015, for which the Fund issued its written consent. The Project Implementation Unit is obliged to fully follow and respect of all provisions of the Loan Agreements No.1588P and No.1589PB between Bosnia and Herzegovina and OFID - OPEC Fund for International Development as well as all other procedures applied by the OFID, during the construction of Klopče - Donja Gračanica motorway subsection.



Map of motorways and expressways in Bosnia and Herzegovina

2. LOAN AGREEMENT

In order to create a stable financial leverage, JP Autoceste FBH has addressed International financing institutions in order to support projects based on loan agreements. The loan agreements were signed with OFID - OPEC Fund for International Development in September 2014 in the amount of 48.000.000 \$ (package A) and 24.000.000 € (package B). Loan funds became effective as of 6th April 2016.

- Section Donja Gračanica - Drivuša, subsection Klopče - Donja Gračanica

3. TECHNICAL DESCRIPTION OF SUBSECTION KLOPČE - DONJA GRAČANICA

The existing local roads in the area of the bridge were relocated as follows: Local road 1 was relocated between the bridge piers S11 and S12 and Local road 2 was relocated between the bridge piers S14 and S15. The regulation of water stream - Đulanov potok was carried out in the area of bridge piers of S14 and S15.

The motorway route (with a length of 1,10 km) is mainly placed in side cut in the area behind the bridge Drivuša all the way to the viaduct Perin Han. The construction of various types of retaining structures such as walls of reinforced soil, gabion walls and reinforced concrete anchor grid construction are planned on that motorway route.

During the design stage of the motorway subsection, the network of local roads as well as providing access to all settlements and assets have been taken into consideration. For all the local roads which are in collision with the motorway subsection it has been foreseen the construction of underpasses or relocation of local roads. It is also taken into consideration to regulate the existing water streams. Except preserving the local road network, these measures are made for improvement of existing traffic conditions in accordance with the recommendations of the Environmental Impact Study.

The route of motorway from km 2 + 197.45 to km 2 + 587.45 passes through Perin Han area via the viaduct. The left viaduct length is 386,78 m while the right viaduct length is 393,22 m. Subsection 1 Drivuša - Klopče ends at km 2 + 680,00.

The route of the subsection 2: Klopče - Donja Gračanica at its beginning is linked to the section Drivuša - Klopče in the zone of viaduct „Perin Han“ on km 2+680,00, and ends on exit zone of tunnel „Pečuj“ on km 8+460,00. The total length of projected alignment of motorway is 5,780 km.

Subsection 2, Klopče - Donja Gračanica was designed using spatially adjusted continual curves of situational plan to satisfy the boundary elements for $V_r = 120$ km/h. Minimum applied radius of horizontal curvature is $R = 900$ m, and maximum $R = 1400$ m.

The first half of the section, in addition to the open alignment, is characterized by presence of a viaduct, while in the other half of section open alignment practically does not exist, the route is composed alternately of three viaducts and two mountain tunnels.

Objects on the route of Subsection 2, are designed in the following order, according to the growth of chainage:

- Viaduct Klopačke Stijene, LI=137.0 m, Ld=138.0 m
- Underpass km 4+988.40
- Viaduct Babina Rijeka, LI=390.11m, Ld=380.24 m,
- Viaduct Pehare, LI=389.12 m, Ld=380.0 m
- Tunnel Ričice, LI=628.00 m, Ld=614.00m,
- Viaduct Ričice, LI=168.0 m, Ld=168.0 m,
- Tunnel Pečuj, LI=999.00m, Ld=1022.00m,

The specified design solutions are given in the detailed design of structures.



4. PROCUREMENT PLAN

JP Autoceste FBiH has prepared a procurement plan. The estimated values are planned, but real values will be determined after completion of the main project and tender procedures. Please consider that contracted values are given in detail under **Chapter 10**.

Values are given in 000 EUR

No.	Description	Estimated	Financed by	Financed by others	Contract	Contract	Procurement	Tender	Contract	Contract
		Contract Value	OPEC	Investor	Amount including VAT	Type	Method	Invitation month/year	Award month/year	Completion month/year
1.	MOTORWAY CONSTRUCTION									
a)	Klopče – Donja Gračanica	110.000	OPEC		107.879	Construction works	Open	Oct-14	May-16	Nov-18 ¹
2.	SUPERVISION									
a)	Klopče - Donja Gračanica	3.000	OPEC		5.473	Supervision	Competitive	Oct-14	May-16	Nov-20
3.	EXPROPRIATION	6.840		JPAFBiH						
4.	VAT 17%	19.210		JPAFBiH						
5.	TOTAL	26.050		JPAFBiH						
6.	TOTAL	60.000	OPEC							

Table 1. Procurement plan

¹ Addendum 1 - Deadline for completion of construction works has been extended until November, 2019

5. MAIN DESIGN

Brief information on the main design for the section Donja Gračanica - Drivuša, subsection Klopče - Donja Gračanica, is represented as follows:

No.	Section	Investor	Status	Comments
1.	Donja Gračanica- Drivuša	MCTBH JPAC	Main project completed	The section is divided into two subsections: 1. Drivuša - Klopče and 2. Klopče - D. Gračanica. The second subsection has been redesigned since the position of interchange has remained on the right side of the river Bosna in the place Donja Gračanica. Both subsections are under construction.

Table 2. Progress of main design

Legend: **MCTBH:** Ministry of Transport and Communications BiH
JPAC: JP Autoceste FBH

6. LAND EXPROPRIATION

The following **Table 3** presents the expropriation activities and their progress up to 31st December 2018 on the section Drivuša - Donja Gračanica, subsection Klopče - Donja Gračanica. The Contractor is in possession of the expropriated land from May 27th 2016 and with Decisions on urgent entry into the possession of the Government of FBiH included, section is 100 % completed.

No.	Section	Municipality	Submitted request to start land acquisition	Started work on the field	Land plots included in Elaborate of land acquisition	Issued decisions of land acquisition	Number of agreements	Completed (%)
1.	Klopče- Donja Gračanica	Zenica	04.07.2012.	29.08.2012.	360	167	159	97%*

Table 3. Progress of land expropriation activities

*With decisions on urgent entry into the possession of the Government of FBiH included, section is 100% completed.

7. CONSTRUCTION PERMITS

In accordance with Law on land planning and land use in the Federation of BiH, there is a defined procedure of issuing preliminary construction permit and final construction permit. In order to issue preliminary construction permit it is necessary to collect 17 approvals, whereas the issuance of final construction permit requires a preliminary construction permit, completed land expropriation activities and completed and revised main design. Accordingly, the construction permit for subsection Drivuša - Klopče was obtained in November 2013. The condition of approvals required for obtaining urban planning and construction permits for section Drivuša - Donja Gračanica as of 30th September 2018 is given in the **Table 4**.

No.	Institutions	Submitted	Status:	Previous Policies
1.	Federal Ministry of Culture and Sports – Institute for the Protection of Monuments	---	Obtained	---
2.	Agency for Water Area of the river Sava (Previous water consent)	---	Obtained	---
3.	BH Telecom d.o.o. Zenica	---	Obtained	---
4.	Ministry of Physical Planning for Zenica - Doboj Canton.	---	Obtained	---
5.	Municipality Zenica (expert opinion)	---	Obtained	---
6.	Railways of The Federation BH	---	Obtained	---
7.	BH Gas	---	Obtained	---
8.	EP BH Elektrodistribucija Zenica	---	Obtained	---
9.	Elektroprijenos BH operative area Sarajevo	---	Obtained	---
10.	Ministry of Agriculture for Zenica - Doboj Canton (consent for deforestation)	---	Obtained	---
11.	Ministry of Agriculture for Zenica - Doboj Canton (consent for conversion of agricultural land)	---	Obtained	---
12.	JKP Vodovod i kanalizacija Zenica (water supply)	---	Obtained	---
13.	Ministry of Defense BH	---	Obtained	---
14.	Ministry of Health Zenica - Doboj Canton (sanitary permit)	---	Obtained	---
15.	Federal Ministry of Environment and Tourism (environmental permit)	---	Obtained	---
16.	Federal Ministry of Physical Planning	The section is divided into two subsections 1. Drivuša - Klopče and 2. Klopče - D.Gračanica. The urban permit was obtained in March 2013. General consent for the construction of Drivuša - D. Gračanica was obtained on October 29 th , 2013 and the construction permit for the subsection Drivuša - Klopče was obtained on November 14 th , 2013. Construction permit was issued on July 2 nd , 2015 for the subsection Klopče - D.Gračanica. Both subsections are under construction.		

Table 4. Construction permits

8. CONSTRUCTION ACTIVITIES OF SUBSECTION KLOPČE - DONJA GRAČANICA

Subsection Klopče - Donja Gračanica

The route of the subsection 2. Klopče - Donja Gračanica at its beginning connects to section Drivuša - Klopče in the zone of viaduct Perin Han at km 2+680.00, and ends in the zone of Tunnel Pečuj at km 8+460,00. Overall length of projected motorway of this subsection is 5,78 km.

The expropriation of this subsection has been completed and the construction permit has been obtained. After the procurement procedures for selecting the best bidder for construction works and the best consultant for supervision were finished, the contract for construction works was signed on May 9th, 2016 while the contract for providing supervision services of construction works was signed on May 6th, 2016.

Geological conditions along the main alignment are very complex which makes the execution of earthworks more complicated. Additional geotechnical investigations have been conducted during November 2018, which resulted in corrections of main design.

Change of main design was required due to the complex geology of the main alignment which caused the relocation of expropriation line. Therefore, construction permit has been updated accordingly.

Ongoing works:

Main alignment

- excavation, slope protection as well as construction of reinforced embankment,

Structures:

Tunnel Ričice

- concreting of secondary lining in both tunnel tubes as well as contact injecting, finalization of joints between segments, edges of tunnel niches and checking the installation ducts are finalized,
- construction of drainage system in both tunnel tubes are finalized (central collector and longitudinal drainage),
- construction of carriageway structure – filter, subbase layer, cement stabilization and asphalt layers are in progress,
- final arrangement of exit portal (reinforced earth) is in progress,
- electro-mechanical works are in progress,

Tunnel Pečuj

- right tunnel tube (RTT) installation of fine layer shotcrete is progressing, preparation of surface for waterproofing, installation of waterproofing, side drainage, reinforcing works and work on secondary lining,
- right tunnel tube (RTT) 80 % of secondary lining is completed,
- left tunnel tube (LTT) secondary lining are finalized,
- construction of drainage system (central collector and longitudinal drainage) as well as carriageway structure (filter, subbase layer) in both tunnel tubes 60 % is completed,

- final arrangement of entrance portal (reinforced earth) is in progress for both tunnel tubes,

Viaduct Klopačke Stijene:

- work on superstructure for both viaducts is in progress,

Viaduct Babina Rijeka:

- right viaduct - work on superstructure is in progress
- left viaduct - work on piers is in progress.

Viaduct Pehare:

- works on both viaducts are carried out continuously ie where the conditions are acquired, works are in progress on pilings, piers as well as superstructures,

Viaduct Ričice:

- works on abutments, piers and superstructure are finalized for both viaducts,

Bridge Drivuša

- works have been suspended due to the relocation of HV line

Relocation of utility installations: underground gas pipe line (completed in March 2017), water lines, electrical and telecommunication lines are progressing in line with dynamic of works on the alignment.

9. CONSTRUCTION PROJECT

Subsection Klopče - Donja Gračania

- Contractor: JV Euro - Asfalt d.o.o. (Lead partner) and Strabag A.G.;
- Number of construction Contract: JPAC 608 - B63 -14;
- Construction contract signed on May 9th, 2016
- The value of the Contract amounts to 107.879.287,94 EUR including VAT;
- The construction period is for section 1 - 900 days, and for section 2 (Viaduct Pehare) - 600 days;
- Amendment No. 1 signed on September 13th, 2018, is a result of entering into force a new Law on Financial Operations that stipulates time limits for execution of financial liabilities. The contract amount as well as the construction period has not been changed.
- Amendment No. 2 signed on December 26th, 2018 for purpose of modifying provisions regarding the time for completion, i.e. for Section 1: additional 365 days (up to the 18th November 2019), and for Section 2: additional 365 days (up to the 18th November 2019). Since the signature of the Contract (May 9th, 2016), significant changes of the Main design have been made in order to consider the changing geological conditions on the site (with respect to the described geological conditions in the original Main design) as well as the damages of the landslides that have been activated due to poor geological conditions on the site. These changes will have influence on the contractual price.

Supervision

- Consultant: Consortium Egis International and IPSA Institut;
- Number of Contract for Consultancy Services: JPAC 609-E314-14 in the contractual amount of 5.473.143 EUR including VAT signed on May 7th, 2016.
- The duration of the Contract is 54 months.
- Amendment No. 1 signed on September 1st, 2016 for purpose of modifying to the available personnel within the supervision team to deal with the specific requirements of additional geotechnical investigation. These changes have no influence on the current contractual price, which remained the same.
- Amendment No.2 to Contract for Consultancy Services: JPAC 609-E314-14 was concluded on May 16th, 2018 for purpose of modifying the nominated personnel within the supervision team because significant changes of the main design have been made due to poor geological conditions on the construction site. These changes have no influence on the contractual price, which remained the same.

10. FINANCIAL POSITION

10.1 OFID - OPEC Fund for International Development

Contractor: JV Strabag - Euroasfalt d.o.o

No.	Description	Period	Net amount exc. VAT EUR	Date of payment	VAT	Date of payment	Total amount EUR
1.	Advance	May 2016	9.220.451,96	07.07.2016	1.567.476,83	08.06.2016	10.787.928,79
2.	First Interim Certificate	June 2016	1.079.172,03	04.08.2016	207.768,11	06.07.2016	1.286.940,14
3.	Second Interim Certificate	July 2016	1.022.161,15	30.09.2016	196.792,07	10.08.2016	1.218.953,22
4.	Third Interim Certificate	August 2016	547.879,51	24.10.2016	105.480,77	07.09.2016	653.360,28
5.	Fourth Interim Certificate	September 2016	752.313,58	01.12.2016	144.839,53	06.10.2016	897.153,11
6.	Fifth Interim Certificate	October 2016	1.181.049,48	19.12.2016	227.382,12	04.11.2016	1.408.431,60
7.	Sixth Interim Certificate	November 2016	1.828.580,25	17.01.2017.	352.048,29	09.12.2016.	2.180.628,54
8.	Seventh Interim Certificate	December 2016	1.687.337,39	13.03.2017.	332.633,43	09.01.2017.	2.019.970,82
9.	Eighth Interim Certificate	January 2017	845.526,70	10.04.2017.	166.682,99	09.02.2017.	1.012.209,69
10.	Ninth Interim certificate	February 2017	974.582,75	20.04.2017.	192.124,47	10.03.2017.	1.166.707,22
11.	Tenth Interim Certificate	March 2017	1.307.929,65	12.05.2017.	257.838,85	10.04.2017.	1.565.768,50
12.	Eleventh Interim Certificate	April 2017	2.107.067,31	16.06.2017.	415.376,93	09.05.2017.	2.522.444,24
13.	Twelfth Interim certificate	May 2017	2.207.555,60	26.07.2017.	435.186,70	09.06.2017.	2.642.742,30
14.	Thirteenth Interim Certificate	June 2017	2.012.479,23	04.08.2017.	396.730,30	10.07.2017.	2.409.209,53
15.	Fourteenth Interim Certificate	July 2017	1.820.772,07	23.09.2017.	358.938,09	10.08.2017.	2.179.710,16
16.	Fifteenth Interim Certificate	August 2017	1.867.075,70	13.10.2017.	368.066,16	08.09.2017.	2.235.141,86
17.	Sixteenth Interim Certificate	September 2017	1.849.487,61	06.11.2017.	364.598,93	09.10.2017.	2.214.086,54
18.	Seventeenth Interim Certificate	October 2017	2.013.522,35	18.12.2017.	396.935,94	10.11.2017.	2.410.458,29
19.	Eighteenth Interim Certificate	November 2017	2.385.604,06	26.01.2018.	470.286,30	11.12.2017.	2.855.890,36
20.	Nineteenth Interim Certificate	December 2017	2.757.302,48	15.03.2018.	543.561,11	12.01.2018.	3.300.863,59
		Total:	39.467.850,86		7.500.747,92		46.968.598,78

Table 5. OFID Fund loan payments for the contractor

Supervisor: JV Egis - IPSA Institut

No.	Description	Period	Net amount exc. VAT EUR	Date of payment	VAT	Date of payment	Total amount EUR
1.	Advance	June 2016	467.790,00	28.10.2016	79.524,30	10.10.2016	547.314,30
2.	First Interim Certificate	July 2016	110.676,05	28.10.2016	18.814,93	11.08.2016	129.490,98
3.	Second Interim Certificate	August 2016	72.399,07	07.11.2016	12.307,84	07.09.2016	84.706,91
4.	Third Interim Certificate	September 2016	122.061,15	01.12.2016	20.750,40	06.10.2016	142.811,55
5.	Fourth Interim Certificate	October 2016	113.799,26	09.01.2017.	19.345,87	10.11.2016.	133.145,13
6.	Fifth Interim Certificate	November 2016	74.778,13	02.02.2017.	12.712,28	09.12.2016.	87.490,41
7.	Sixth Interim Certificate	December 2016	74.861,01	13.03.2017.	12.726,37	09.01.2017.	87.587,38
8.	Seventh Interim Certificate	January 2017	70.866,95	10.04.2017.	12.047,38	09.02.2017.	82.914,33
9.	Eighth Interim Certificate	February 2017	77.003,89	20.04.2017.	13.090,66	10.03.2017.	90.094,55
10.	Ninth Interim certificate	March 2017	71.813,39	12.05.2017.	12.208,28	10.04.2017.	84.021,67
11.	Tenth Interim Certificate	April 2017	64.475,19	21.06.2017.	10.960,78	09.05.2017.	75.435,97
12.	Eleventh Interim Certificate	May 2017	64.616,69	26.07.2017.	10.984,84	09.06.2017.	75.601,53
13.	Twelfth Interim certificate	June 2017	69.031,21	22.08.2017.	11.735,31	10.07.2017.	80.766,52
14.	Thirteenth Interim Certificate	July 2017	67.403,63	23.09.2017.	11.458,62	10.08.2017.	78.862,25
15.	Fourteenth Interim Certificate	August 2016	84.420,94	13.10.2017.	14.351,56	08.09.2017.	98.772,50
16.	Fifteenth Interim Certificate	September 2016	58.790,50	28.11.2017.	9.994,38	13.10.2017.	68.784,88
17.	Sixteenth Interim Certificate	October 2016	73.728,59	18.12.2017.	12.533,86	10.11.2017.	86.262,45
18.	Seventeenth Interim Certificate	November 2017	76.554,42	26.01.2018.	13.014,25	11.12.2017.	89.568,67
19.	Eighteenth Interim Certificate	December 2017	72.234,13	16.02.2018.	12.279,80	12.01.2018.	84.513,93
20.	Nineteenth Interim Certificate	January 2018	75.730,81	28.03.2018.	12.874,24	09.02.2018.	88.605,05
21.	Twentieth Interim Certificate	February 2018	84.133,60	11.04.2018.	14.302,71	09.03.2018.	98.436,31
22.	Twenty-first Interim Certificate	March 2018	81.775,36	16.05.2018.	13.901,81	09.04.2018.	95.677,17
23.	Twenty-second Interim Certificate	April 2018	85.309,69	20.06.2018.	14.502,65	09.05.2018.	99.812,34
24.	Twenty-third Interim Certificate	May 2018	131.397,02	03.08.2018.	22,337.49	08.06.2018.	153,734.51
25.	Twenty-fourth Interim Certificate	June 2018	111.575,08	14.09.2018.	18,967.76	09.07.2018.	130,542.84
26.	Twenty-fifth Interim Certificate	July 2018	114.784,34	24.09.2018.	19,513.34	09.08.2018.	134,297.68
Total:			2.572.010,10		437.241,71		3.009.251,81

Table 5a. OFID Fund loan payments for the supervision

Recapitulation of OFID loan payments

Subsection: Klopče – Donja Gračanica

No.	OFID fund loan 1588P			Note
	Total amount of the loan	Approx. 60.000.000,00	€	
1.	JV Strabag - Euroasfalt	39.467.850,86	€	Details are given in Table 5.
2.	JV Egis – IPSA Institut	2.572.010,10	€	Details are given in Table 5a.
TOTAL:		42.039.860,96	€	

Table 6. OFID fund loan report

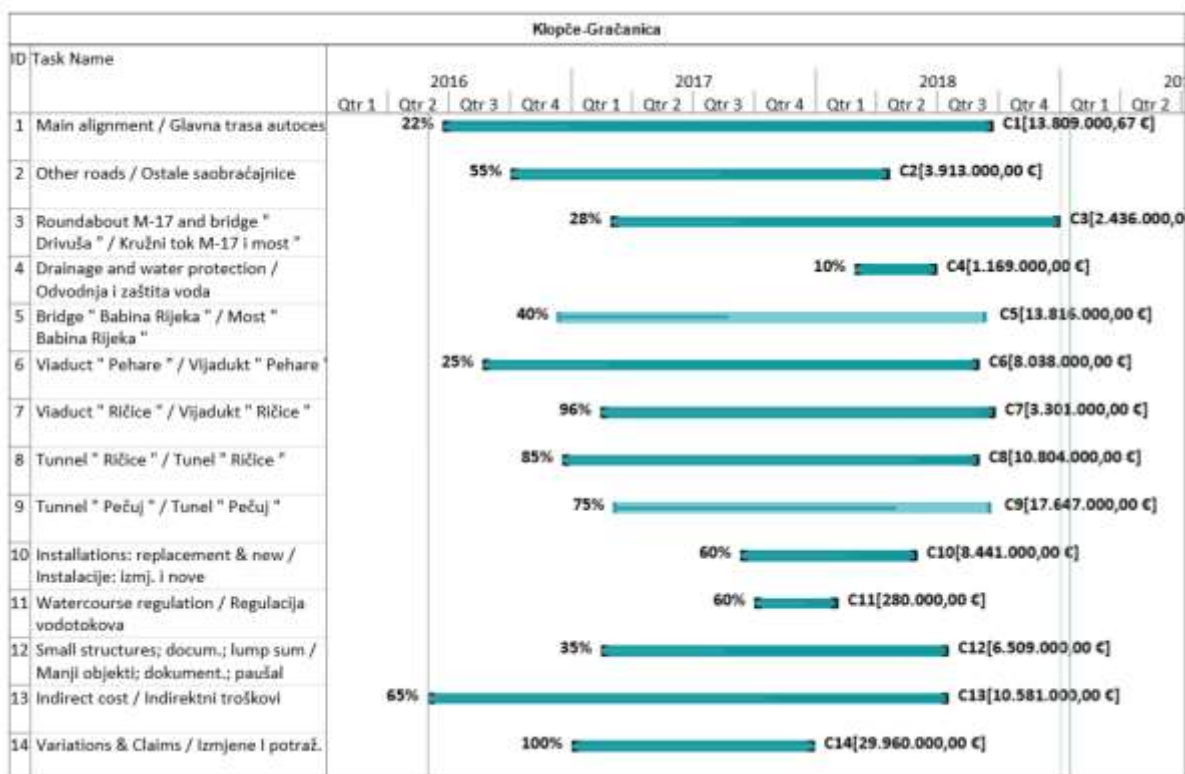
11. PROGRESS OF CONSTRUCTION WORKS ON SUBSECTION KLOPČE - DONJA GRAČANICA

Progress of construction works on subsection Klopče - Donja Gračanica as of 31st December, 2018.

No.	ID	Works description	Duration (months)	Start	Deadline	% of Completion	Type of Works in construction
1.		MOTORWAY ALIGNMENT	42	01.06.2016	18.11.2019	27%	Under construction
2.		LOCAL ROADS	42	01.06.2016	18.11.2019	28 %	Under construction
3.		DRAINAGE AND WATER PROTECTION SYSTEM	42	01.06.2016	18.11.2019	0 %	Under construction
4.		EQUIPMENT AND SIGNALISATION	42	01.06.2016	18.11.2019	0 %	Under construction
5.		BRIDGES					
	5.1.	Viaduct Klopače	42	01.06.2016	18.11.2019	10 %	
	5.2.	Viaduct Klopačke Stijene	42	01.06.2016	18.11.2019	40 %	Under construction
	5.3.	Bridge Babina Rijeka	42	01.06.2016	18.11.2019	43 %	Under construction
	5.4.	Viaduct Pehare	42	01.06.2016	18.11.2019	25 %	Under construction
	5.5.	Viaduct Ričice	42	01.06.2016	18.11.2019	95 %	Under construction
	5.6.	Drivuša Bridge	42	01.06.2016	18.11.2019	47 %	Under construction
6.		TUNNELS					
	6.1.	Tunnel Ričice	42	01.06.2016	18.11.2019	85 %	Under construction
	6.2.	Tunnel Pečuj	42	01.06.2016	18.11.2019	75 %	Under construction
7.		RELOCATION OF UTILITY	42	01.06.2016	18.11.2019	60 %	Under construction
8.		REGULATION OF WATERCOURSE	42	01.06.2016	18.11.2019	60 %	Under construction
9.		ENGINEER'S CONSTRUCTIONS AND SMALLER STRUCTURES					
	9.1.	Underpass at km 4+063	42	01.06.2016	18.11.2019	95 %	Under construction
	9.2.	Retention walls and smaller structures	42	01.06.2016	18.11.2019	30 %	Under construction

Table 7. *Progress of construction works on: Subsection Klopče - Donja Gračanica*

Gantt chart 1. Progress of construction works on subsection Klopče - Donja Gračanica



CASH FLOW 1., 2018-Q4 subsection Klopče - Donja Gračanica.

